

AssetActive™ LD Real-Time Leak Monitoring System

Just what the doctor ordered. A solution to deliver accurate and timely data essential in determining leaks. The AssetActive™ LD real-time leak monitoring system keeps your water assets on track to ensure timely and cost-effective monitoring and repair if necessary.

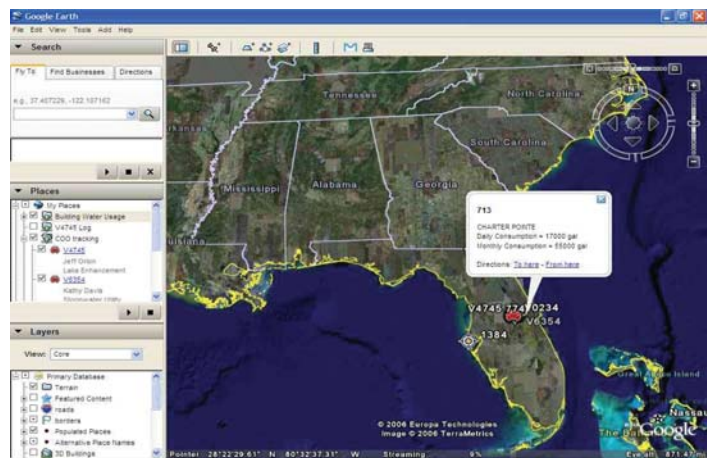
Problem

- The average unaccounted for water in U.S. public water systems serving more than 1 million people is 17.2%.
- In systems that are older or in poor condition, water loss is reported at an astounding 35-55%.
- 1,800,000 gallons per month, or 60,900 gallons per day, can be lost through a leak as small as one half inch in size.

Lost water is lost money.

Solution

PraxSoft has developed a viable solution to help solve this problem. AssetActive LD is a state-of-the-art real-time monitoring solution that works within your system. Leaks are quickly detected and accurately diagnosed through a combination of smart wireless sensors and live flow monitoring to enable immediate repair. Remote monitoring of the devices is around the clock, and on-site service can be provided 24/7 by highly skilled technical professionals.



Technical

AssetActive™ wireless sensors form a network and communicate to allow preventative water management and leak monitoring vital to industries that want to cut water loss. The system employs advanced technology and works by attaching tags to individual meters or within the water line. The tags have onboard sensors that read the flow rate and communicate with other tags to report information and check status. All tag information collected is displayed on an easy-to-access Web site enabling you to see the real-time water usage of your system or facility. Any anomalies, like an unusual flow rate or usage spike, are diagnosed at the site-specific location. When problems are uncovered, alerts are sent to the main network and designated e-mails or pagers so technicians can be dispatched.

Benefits

- Proactive monitoring and health/well-being of water systems
- Predictive maintenance
- Real-time monitoring and water usage visibility
- Tag options to sense water quality, etc.
- Properly manages and archives usage data
- Improves operational efficiency
- Reduces cost and water loss
- Measures flow rate (rather than amount of water) critical for early, precise detection of leaks
- Leading edge "asset management"
 - Asset condition information
 - Linked to physical asset
 - Correct identification of assets
 - Audit trail for reporting

